

ProTek Systems, Inc.

PROTEK SYSTEMS, INC.
 1250 WALLACE DR UNIT B
 DELRAY BEACH, FL 33444
 TELEPHONE: 800-598-2153
 FAX: 561-395-4771
 SALES@PROTEKMAIL.COM

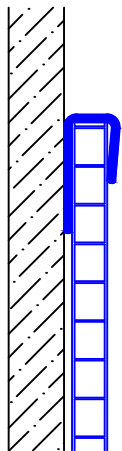
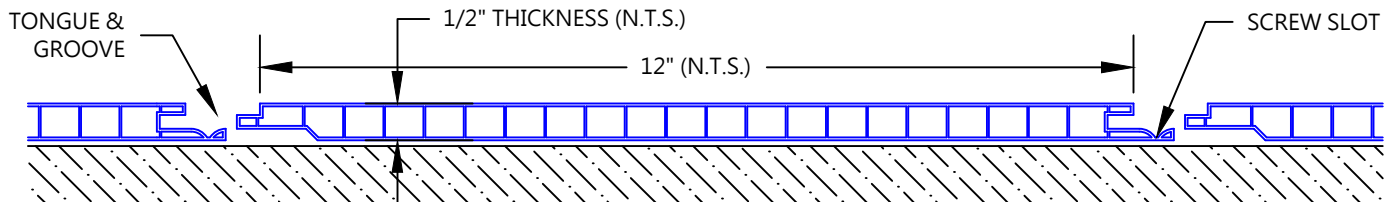
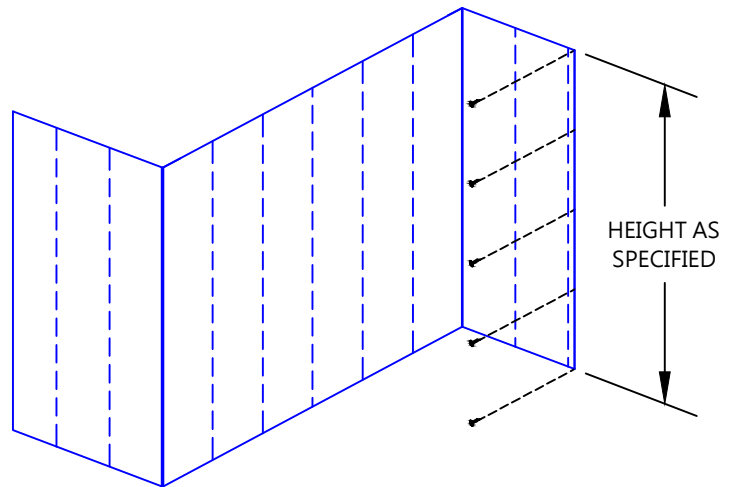
WCUL-1200 INTERLOCKING WALL & CEILING PANEL SYSTEM

FEATURES:

- CORRUGATED PLASTIC CORE
- SEAMLESS CONNECTION WITH INTERLOCKING EDGES
- 100% MOISTURE RESISTANCE
- HIGH GLOSS, SMOOTH SURFACE
- 1/2" THICKNESS AVAILABLE IN 12" PANELS
- PANELS CUT TO REQUESTED LENGTH FROM 4FT UP TO 20FT

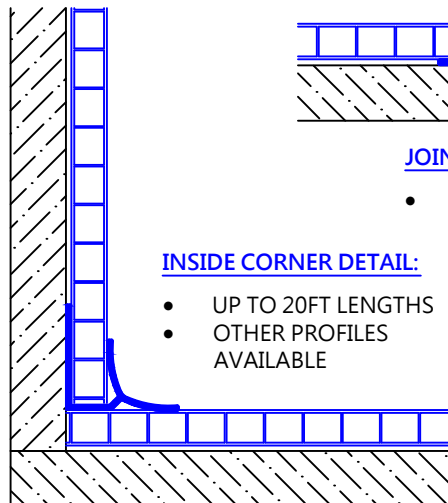
MOUNTING OPTIONS:

- RECOMMENDED SCREW SIZE IS 1 1/4" #6 PHILLIPS BUGLE HEAD SCREW
- MAXIMUM SPACING 24" O.C. WITH BACKING
- SILICONE SEALANT AT ALL SEAMS



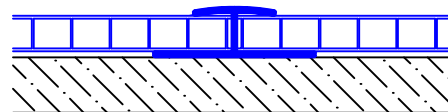
TOP/EDGE CAP DETAIL:

- UP TO 20FT LENGTHS



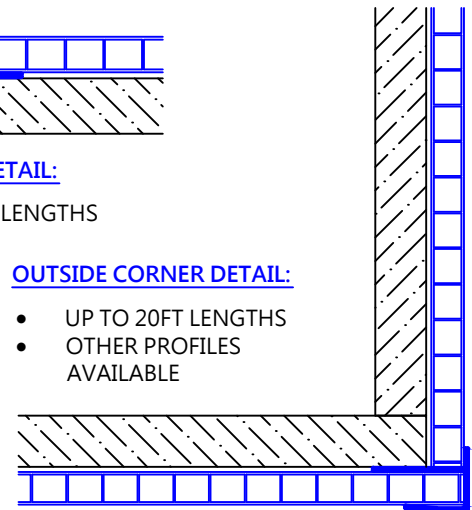
INSIDE CORNER DETAIL:

- UP TO 20FT LENGTHS
- OTHER PROFILES AVAILABLE



JOINT COVER DETAIL:

- UP TO 20FT LENGTHS



OUTSIDE CORNER DETAIL:

- UP TO 20FT LENGTHS
- OTHER PROFILES AVAILABLE

| | | |
|------------|------------|------------------|
| CUSTOMER: | PROJECT: | WCUL-1200 |
| ARCHITECT: | SALES REP: | |